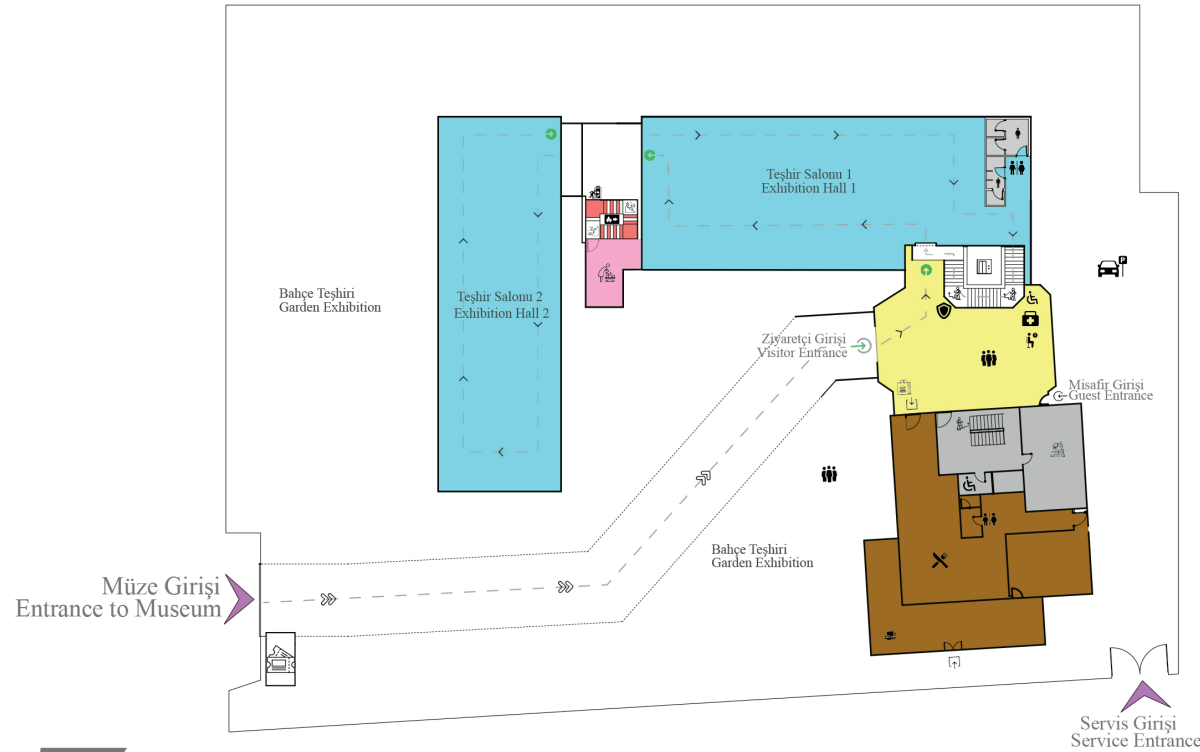
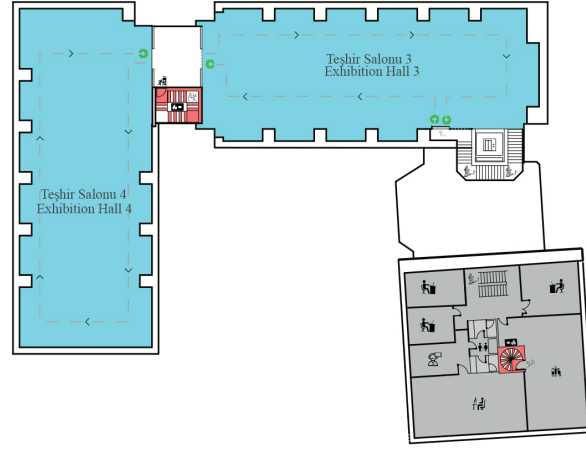


1 Birinci Kat First Floor



Z Zemin Kat Ground Floor

- Müze Girişi
Entrance to Museum
- Gişe
Ticket Office
- Güvenlik / Ziyaretçi Danışma
Security / Visitor Center
- Bekleme Salonu
Waiting Hall
- Acil Toplanma Alanı
Emergency Shelter
- Müdüriyet
Office of Director
- Sekreterlik
Secretary
- Müze Çalışanları
Museum Workers
- Restorasyon ve Konservasyon Laboratuvarı
Restoration and Conservation Laboratory
- Kütüphane
Library
- Kafe Kafe Girişi
Cafe Enter to Cafe
- Tuvalet
Restroom
- Bebek Bakım Odası
Baby Care Room
- Yangın Kaçış Yeri
Fire Movement
- Yangın Çıkışı
Fire Exit
- İlk Yardım
First-aid
- Merdivenler
Steps
- Aşansör
Elevator
- Engelli
Accessible
- Otopark
Car Park
- Hediyelik Satış Ünitesi
Souvenir Automat
- Tur Güzergâhı
Tour Guide



Visiting Hours

Opening Time: 08:00
Closing Time: 17:00
Ticket Office Closing Time: 16:30

Address: Akarbaşı Mah., Atatürk Bulvarı, No: 64 • Phone: 0222 230 13 71

Please visit the web site for up-to-date information.

[f TurkishMuseums](#) [i officialturkishmuseums](#) [t TurkishMuseums](#) [v TurkishMuseums](#) [e TurkishMuseums](#)

www.turkishmuseums.com



www.muze.gov.tr



ETİ ARCHAEOLOGY MUSEUM

MEMORY OF THE CITY

GENERAL DIRECTORATE FOR
CULTURAL ASSETS AND MUSEUMS





A warehouse museum was established in Alaeddin Mosque of Eskişehir with movable cultural assets gathered from Eskişehir and various cities. In 1966, after Eskişehir Museum Directorate was officially established in Kurşunlu Mosque Complex in Odunpazarı Quarters, it was put into service and the exhibition of artefacts began. In 1974, operations continued in a new building on Atatürk Boulevard in the Akarbaşı district.

Due to the inadequacies of the museum building and the need for a modernized museum to meet today's conditions, it was closed to visitors in 2001. According to the protocol signed on 28.02.2007 between the Ministry of Culture and Tourism and the Board of Directors of the ETİ Group of Companies, the ETİ Group of Companies took over the sponsorship of the new museum building.



Eskişehir ETİ Archaeology Museum is the first museum introduced by the private sector from its project to the exhibition of artefacts. In 2010, the construction of the museum building was completed, and the administration building was put into service. The new museum building, built on an area of about 1500 m², has an area of 4000 m² in three blocks. The basement serves as the administrative block, laboratory, and photography room; the ground floor serves as the cafeteria, and the 1st and 2nd floors serve as the library and administrative section.

The immovable cultural assets of Türkiye are displayed in the garden of the museum. The ground floor of the B block is used as a multi-purpose hall for events such as exhibitions, conferences, etc.; the ground floor of the C block is used as a semi-open exhibition and periodic exhibition halls; the basement floors of the B and C blocks are used for storage; the first floors of the B and C blocks are used entirely as an exhibition hall for archaeological artefacts.



Eskişehir ETİ Archeology Museum, which was officially opened by His Excellency the President on May 28, 2011, has a collection of artefacts acquired through purchase, donation and confiscation, and especially artefacts discovered during excavations and surface surveys in ancient settlements in Eskişehir.

The museum's exhibition halls mainly display artefacts from scientific excavations conducted at archaeological sites such as Dorylaion (Şarhöyük Eskişehir-Tepebaşı), Pessinus (Sivrihisar-Ballıhisar), Han Underground City (Han Yazılıkaya), Keçiçayırı (Seyitgazi-Bardakçı), Çavlum Village Old Hittite Necropolis (Odunpazarı-Çavlum), Demircihöyük (Çukurhisar-Tepebaşı), Karacahisar (Odunpazarı-Karacaşehir) Küllüoba (Seyitgazi-Yenikent) are displayed in chronological order along with important finds.

Among the exhibits are marble statues and figures figurines, architectural pieces, stelae, terracotta daily use vessels, idols, glass vessels and beads, metal vessels and weapons, jewelry, and coins.

In Eskişehir ETİ Archeology Museum there are about 22,500 movable cultural objects from the Neolithic, Chalcolithic, Bronze Age, Hittite, Phrygian, Hellenistic, Roman, Byzantine, Seljuk, and Ottoman periods. In addition to the approximately 2,000 works on display in the museum's closed rooms covering an area of about 1,800 square meters, 20,500 artefacts are kept in the museum warehouses of 900 square meters.