

**Visiting Hours**

Opening Time: 09:00  
 Closing Time: 17:00  
 Ticket Office Closing Time: 16.00

Closed on Saturdays, Sundays, Mondays.

**Address:** Paşakent Mah. Şehit Cengiz Karabıyık Cad. Atatürk Parkı Yanı 10200 Bandırma/BALIKESİR • **Phone:** 0266 715 41 38

Please visit the web site for up-to-date information.


[f TurkishMuseums](#)
[i officialturkishmuseums](#)
[t TurkishMuseums](#)
[y TurkishMuseums](#)
[o TurkishMuseums](#)

[www.turkishmuseums.com](http://www.turkishmuseums.com)

[www.muze.gov.tr](http://www.muze.gov.tr)



GENERAL DIRECTORATE FOR CULTURAL ASSETS AND MUSEUMS



**BANDIRMA MUSEUM**

LET'S JOIN THE HISTORICAL PAST OF THE ANCIENT MYSIA REGION WITH OUR IMAGINATION



This museum exhibits archaeological artefacts from the Archaic, Classical, Hellenistic, Roman and Eastern Roman periods from 3000 BCE onwards, as well as ethnographic works that reflect the traces of our past.



The intolerability of the pain of death in every epoch of history!

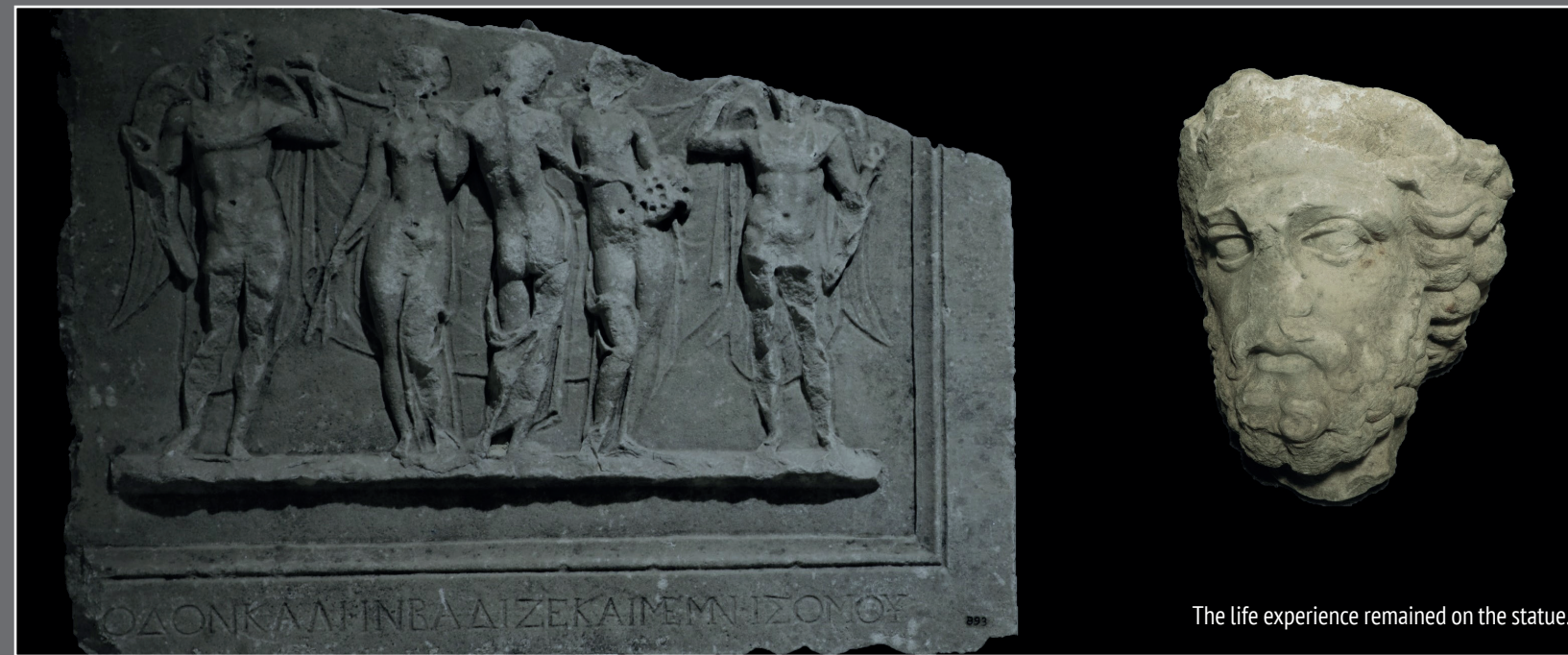
Wouldn't you like to see one of the rarest artefacts of the Bandırma Museum and understand the belief in the other world in antiquity?



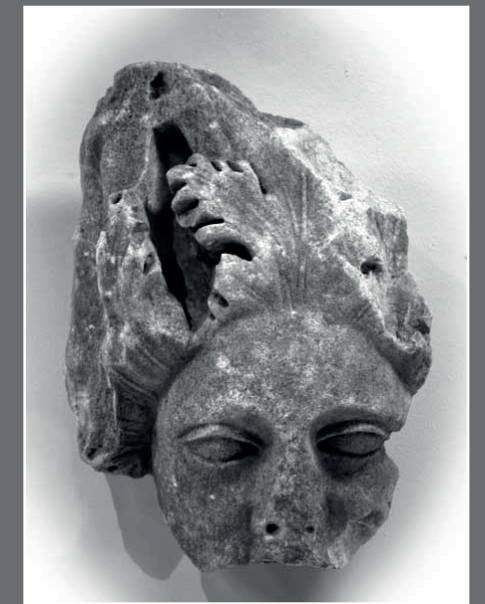
The first purchasing power in history...



Journey to the underworld with Hermes ... While on the outer surface of the Kylix from the Kocaresul Tumulus in the necropolis of the ancient city of Dascylium athletes and their trainers can be seen, Hermes accompanies the soul of the deceased in the scene on the inside, with Hermes and a noble woman next to it.



The life experience remained on the statue...



The high peak created in art ... Reflections on the face are still felt today...